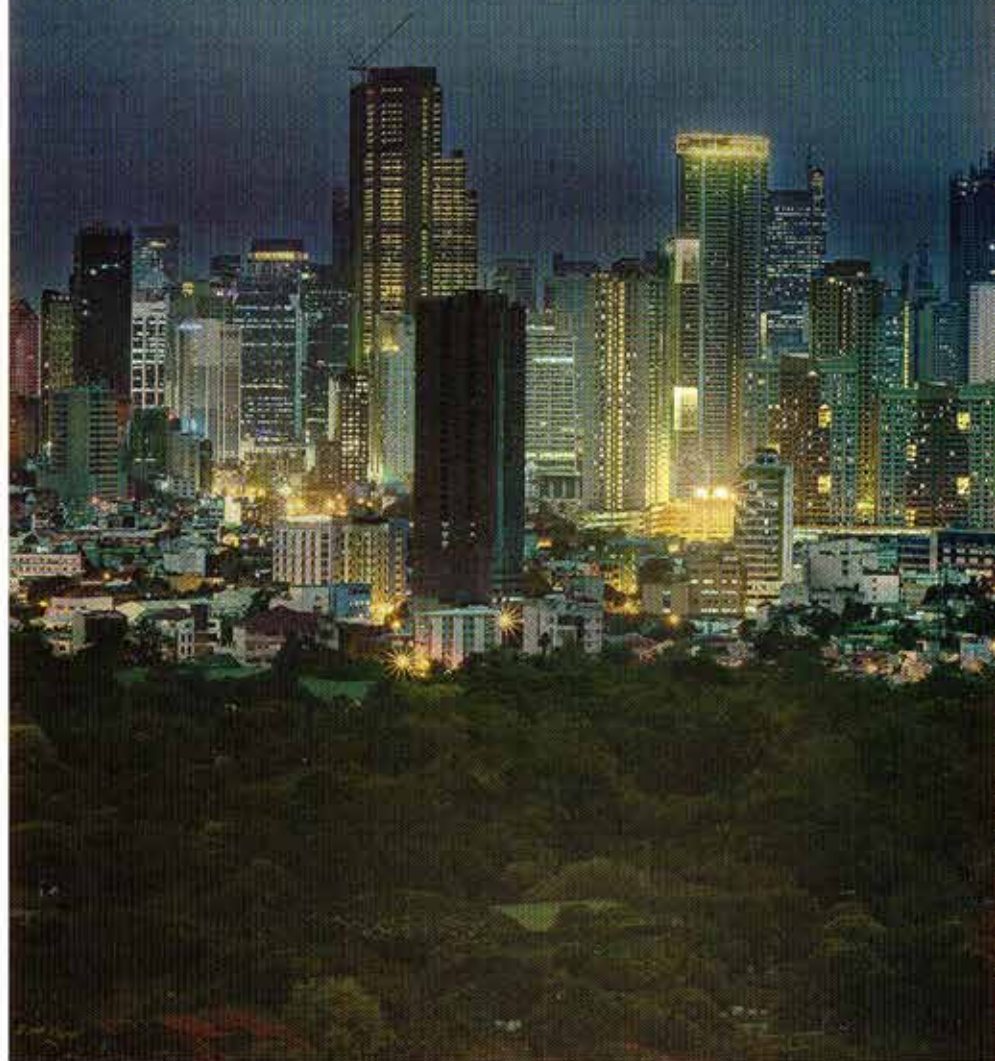


# VISTA SHAW

An investment as beautiful as its view.



## ABOUT VISTA SHAW

Vista Shaw will be one of the most ideal places to live in Mandaluyong City. The two-tower, 38-storey property will rise over Shaw Boulevard, at the corner of Laurel Street, where the former Laurel Mansion, home to President Jose P. Laurel and his family for generations, still stands.

Vista Shaw stands in a peaceful and green corner of Shaw Boulevard, surrounded by age-old trees, and is gifted with a view of the Wack Wack Golf Course – the country's oldest course, deemed one of the finest in the world.

**Elegance Reigns  
with a Beautifully  
Modern Twist**

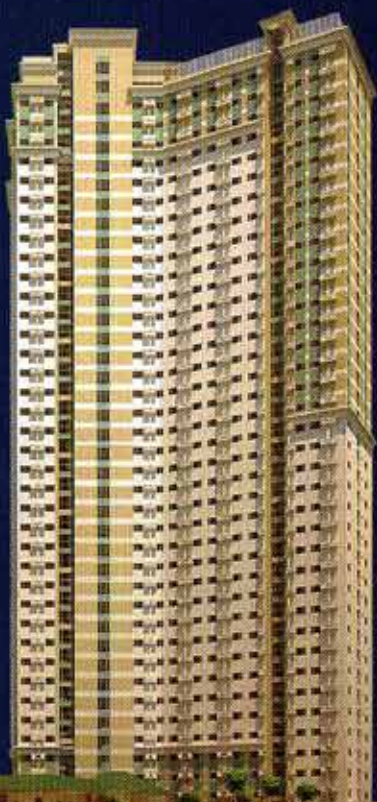


## AMENITIES

**The Elegance of the Past Enhancing  
Entirely Modern Conveniences**

Vista Shaw will offer modern amenities all wrapped up in a setting that echoes our most elegant history.

- Swimming Pool
- Fitness Gym
- Function Rooms
- Landscaped Gardens
- Commercial Spaces





## UNIT FLOOR PLANS

### Building Features:

- Fire detection and alarm systems
- Fire escape stairs
- Sprinkler system
- Standby generator
- Four-level basement parking
- WIFI on amenity area
- High-speed elevators
- 24-hour security



Studio Unit  
Floor Area: 27.80 sqm.



One-Bedroom Unit  
Floor Area: 30.46 sqm.

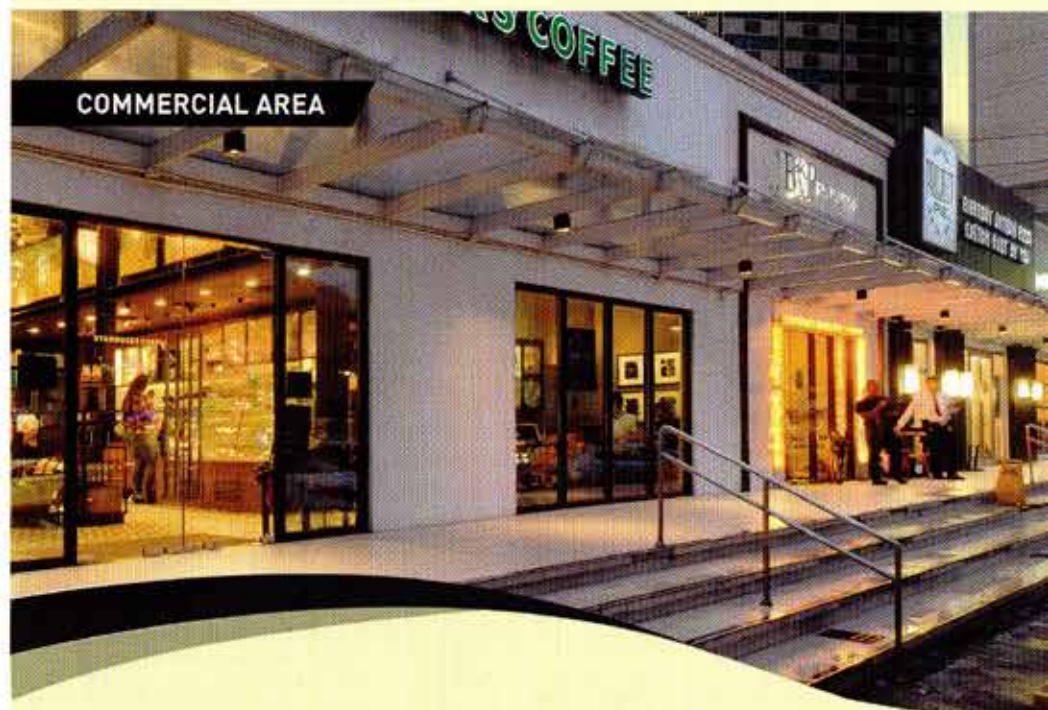


Two-Bedroom Unit  
Floor Area: 50.43 sqm.

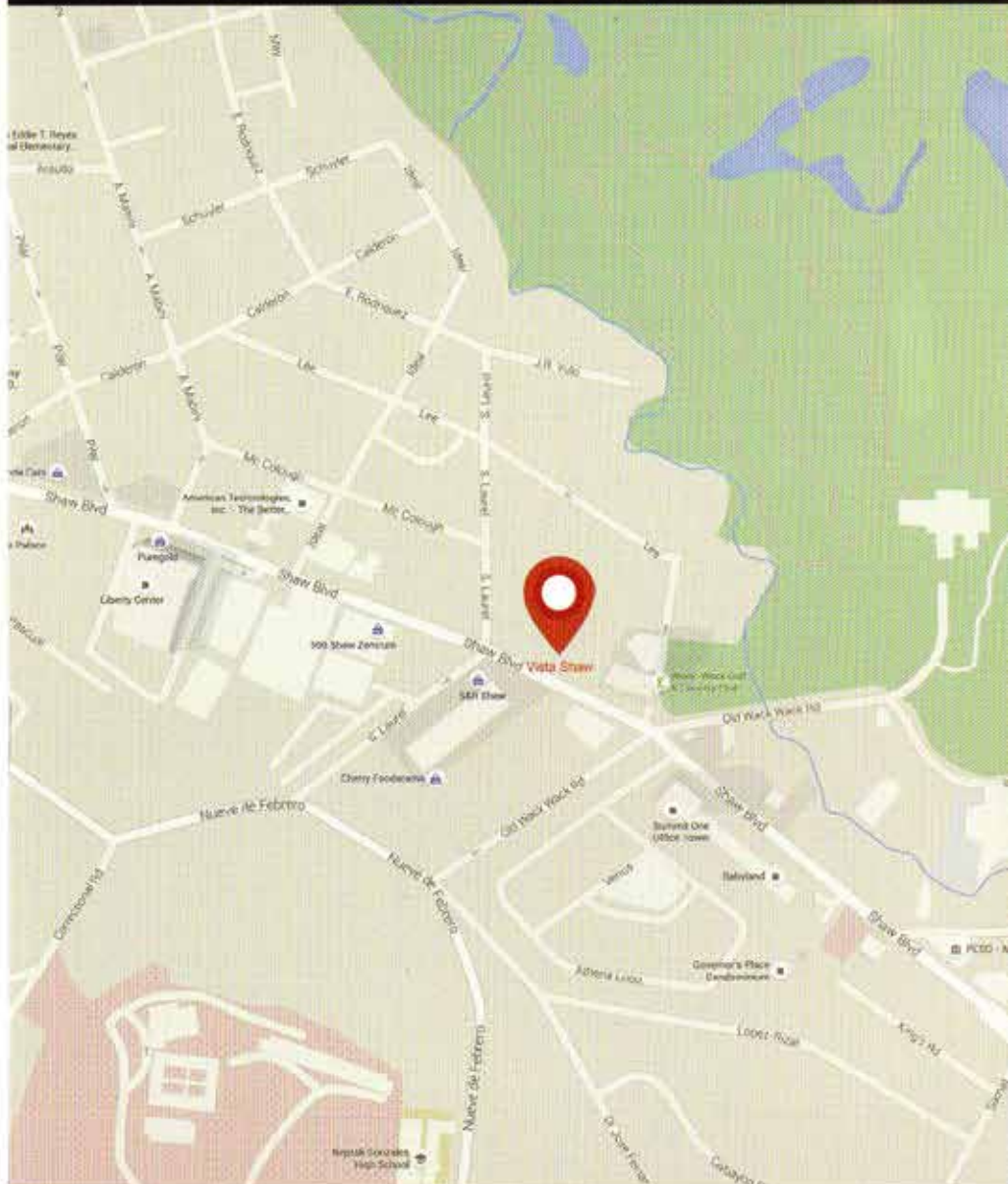


Tandem Unit  
Floor Area: 60.88 sqm.

## COMMERCIAL AREA




To pay tribute to the property's history and prestige, the mansion will remain as a commercial hub connecting the twin towers – creating for the residents a virtually self-contained vertical community.



For inquiries:

 **VISTA RESIDENCES**  
A Vista Land Company  
[www.vistaresidences.com.ph](http://www.vistaresidences.com.ph)

 [www.vistaresidences.com.ph](http://www.vistaresidences.com.ph)

 [vistaresidencesofficial](https://www.facebook.com/vistaresidencesofficial)

LTS No. 29234